



Australian Government



Murray-
Darling
Basin
Authority

Managing the Murray-Darling Basin and the 2026 Basin Plan Review

Joel Bailey

General Manager, Applied Science



We acknowledge the Traditional Owners and Custodians of Country throughout the Murray–Darling Basin and their continuing connection to land, waters and community.

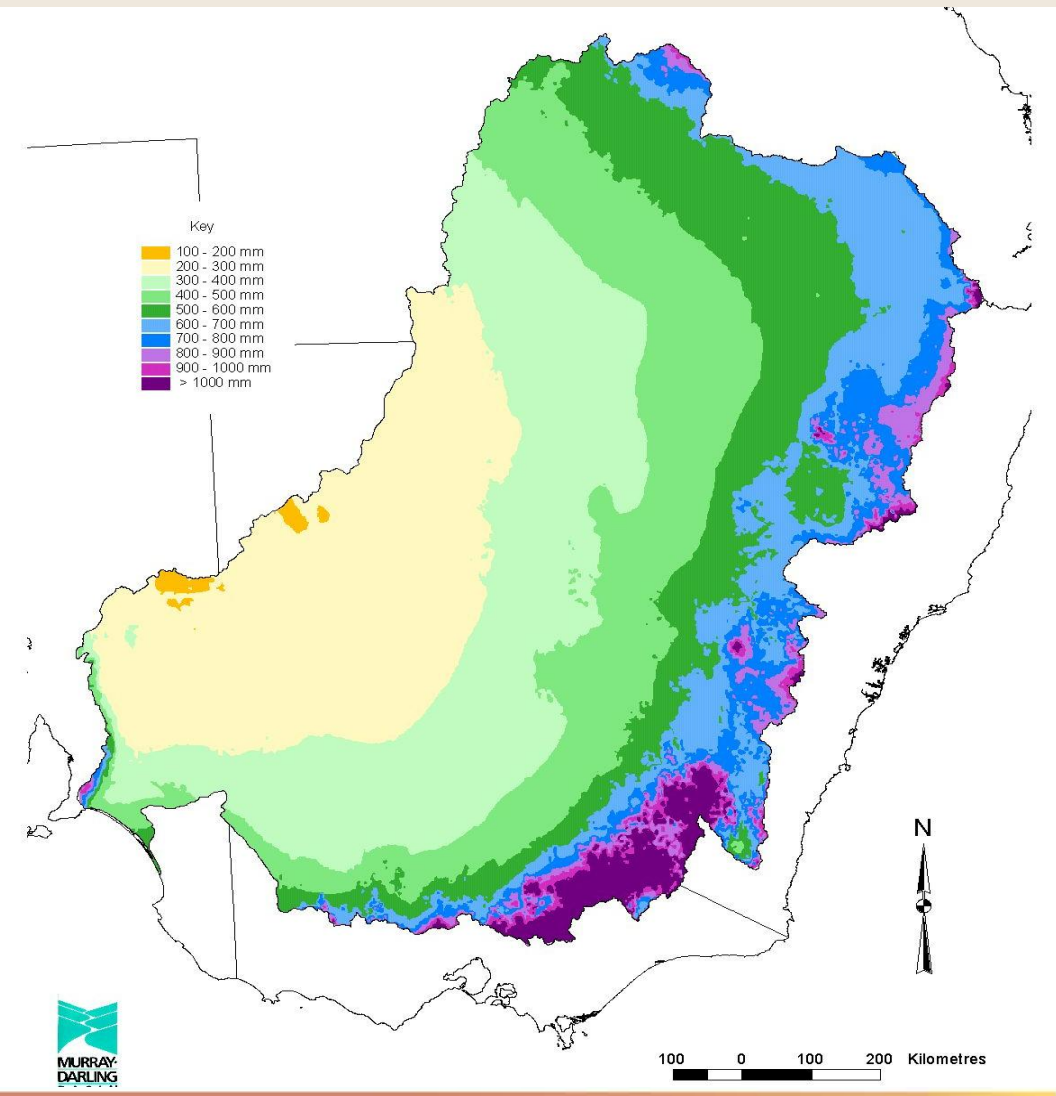
We offer our respects to the people, the Cultures and the Elders past and present.

What you'll hear today

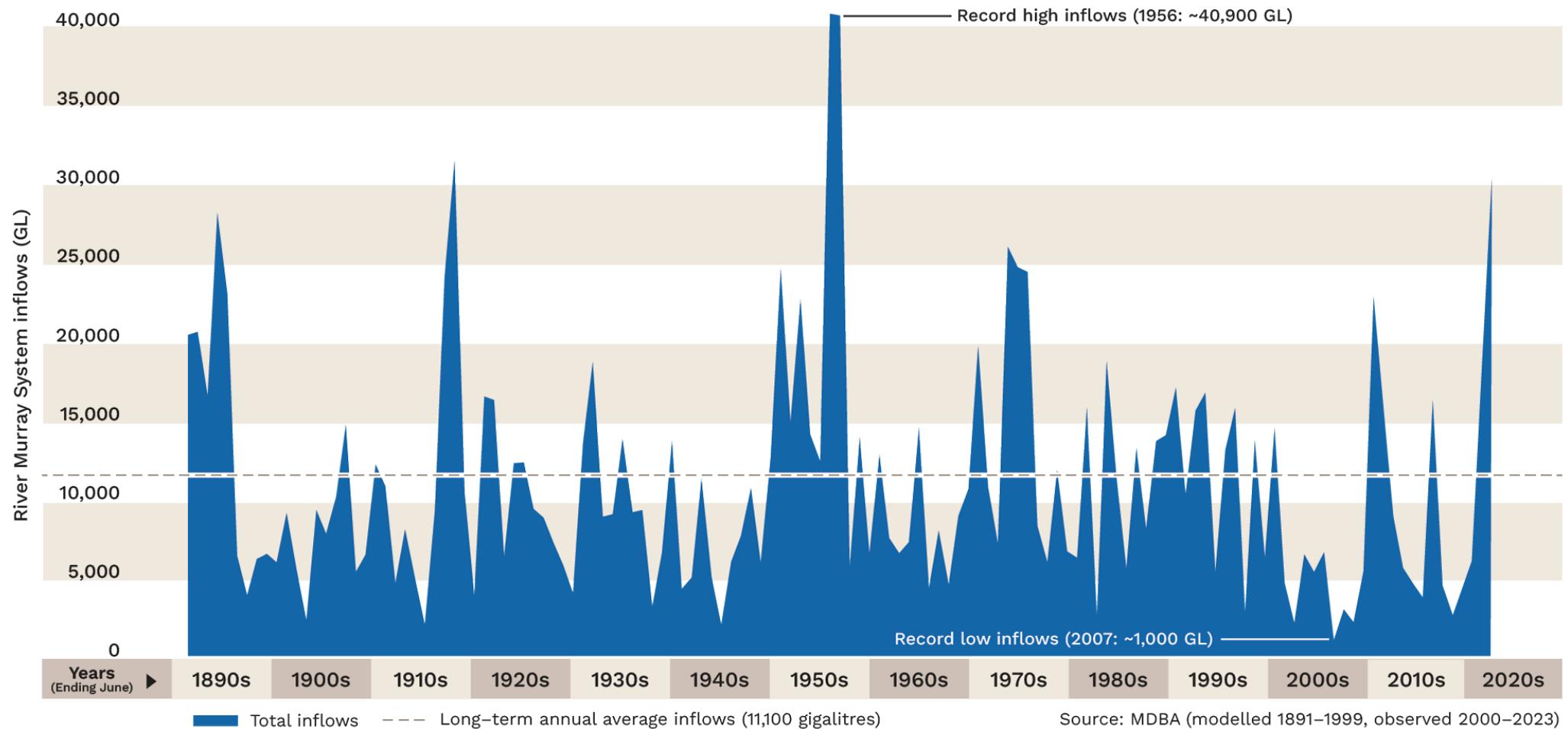
- Overview of **Basin management**
- **The Basin Plan** and the current Review
- How to make a **submission**



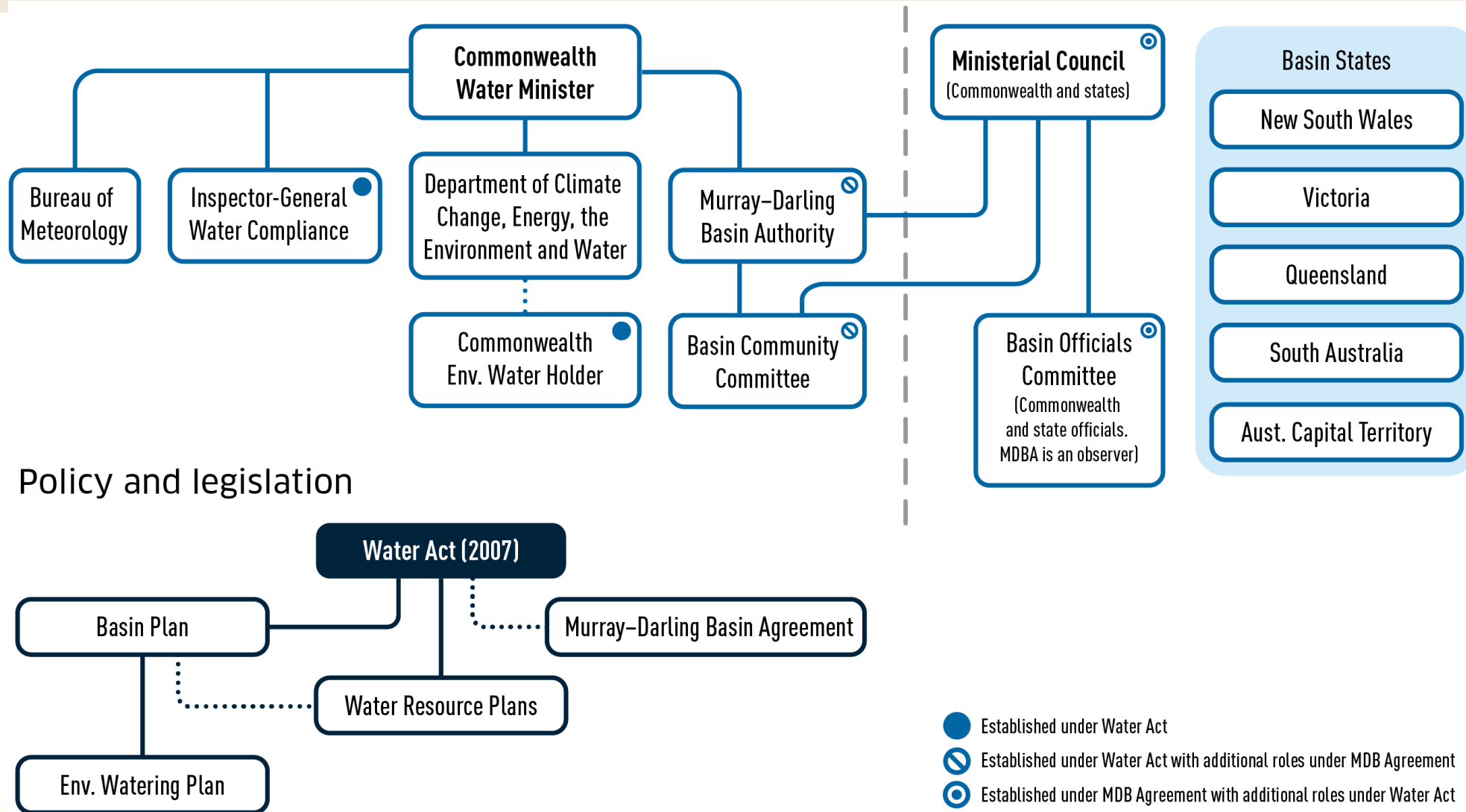
Basin Hydrology – 2 sub-basins



River Murray inflows – highly variable

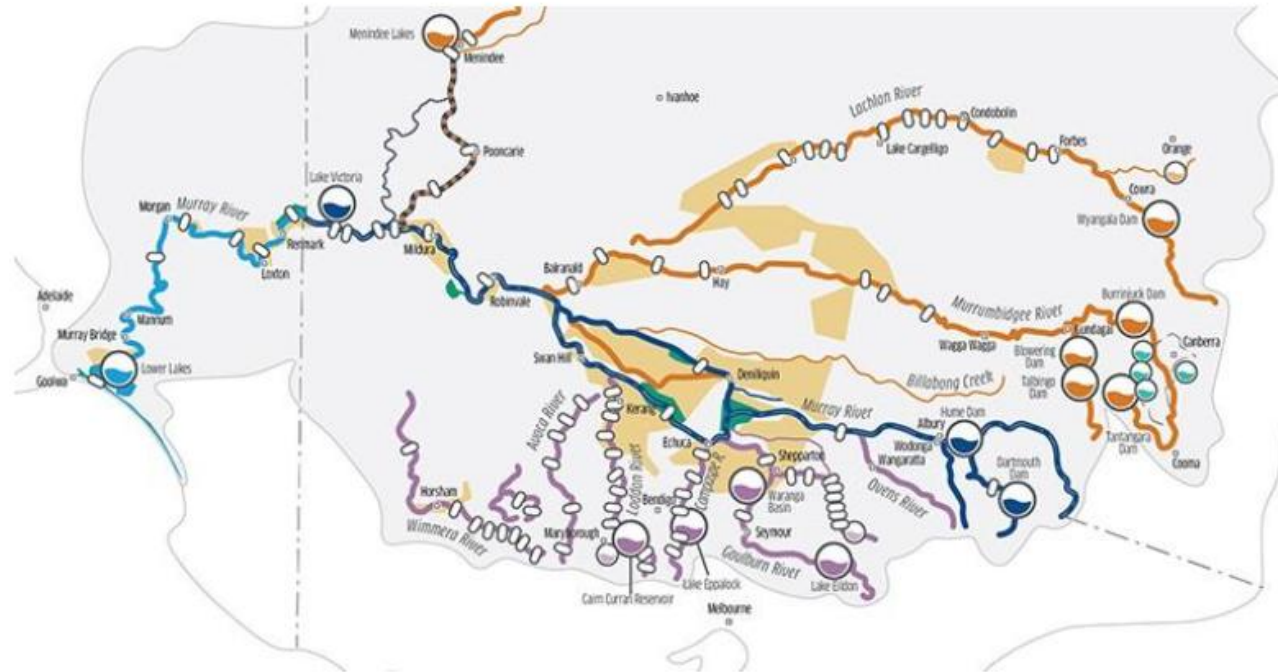


Governance of the Basin



Shared responsibilities

The map below shows who is responsible for managing the rivers and water storages in the southern Basin.

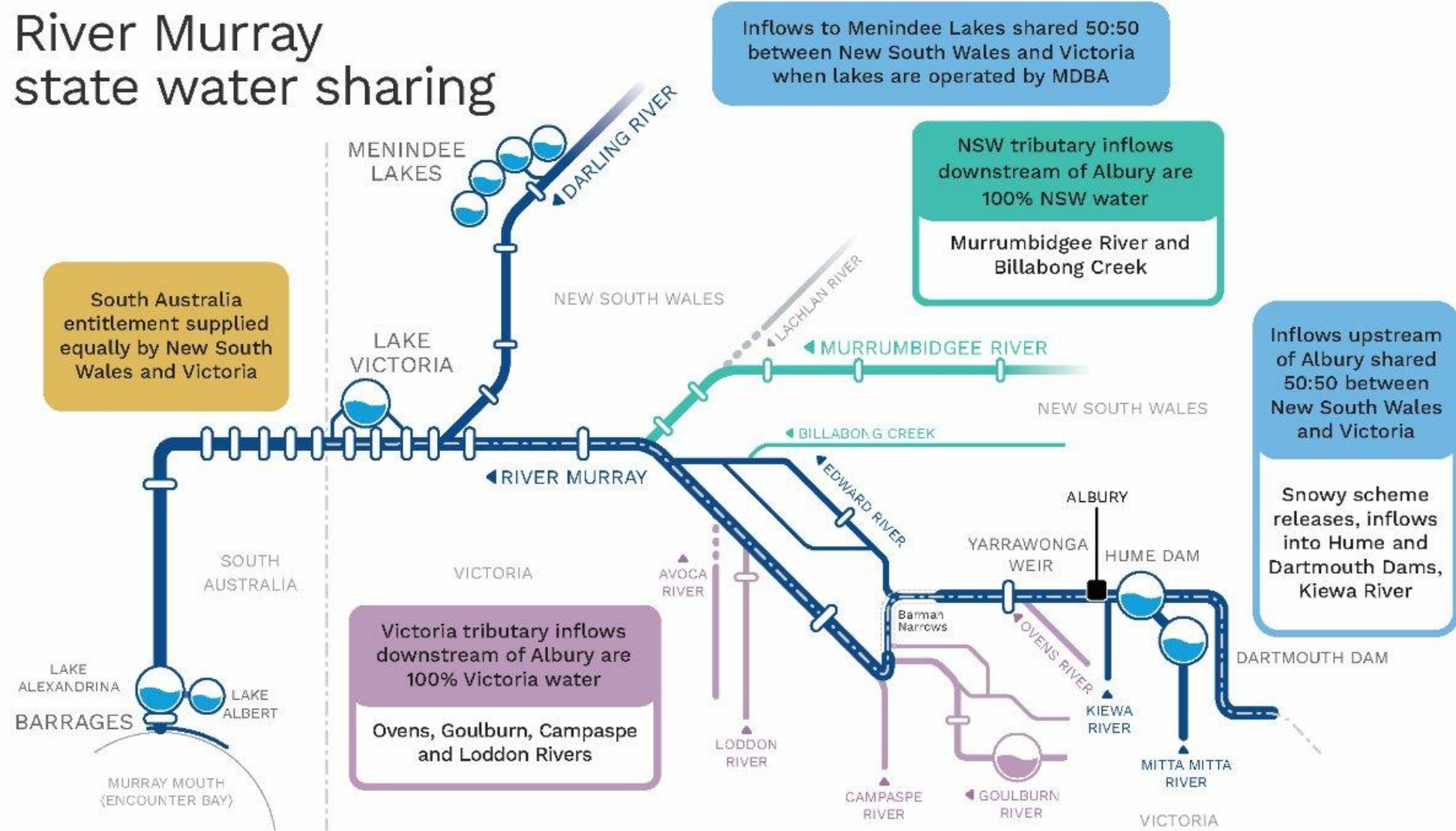


Responsibility for operation

- MDBA (River Murray System)
- New South Wales
- Victoria
- South Australia
- Australian Capital Territory

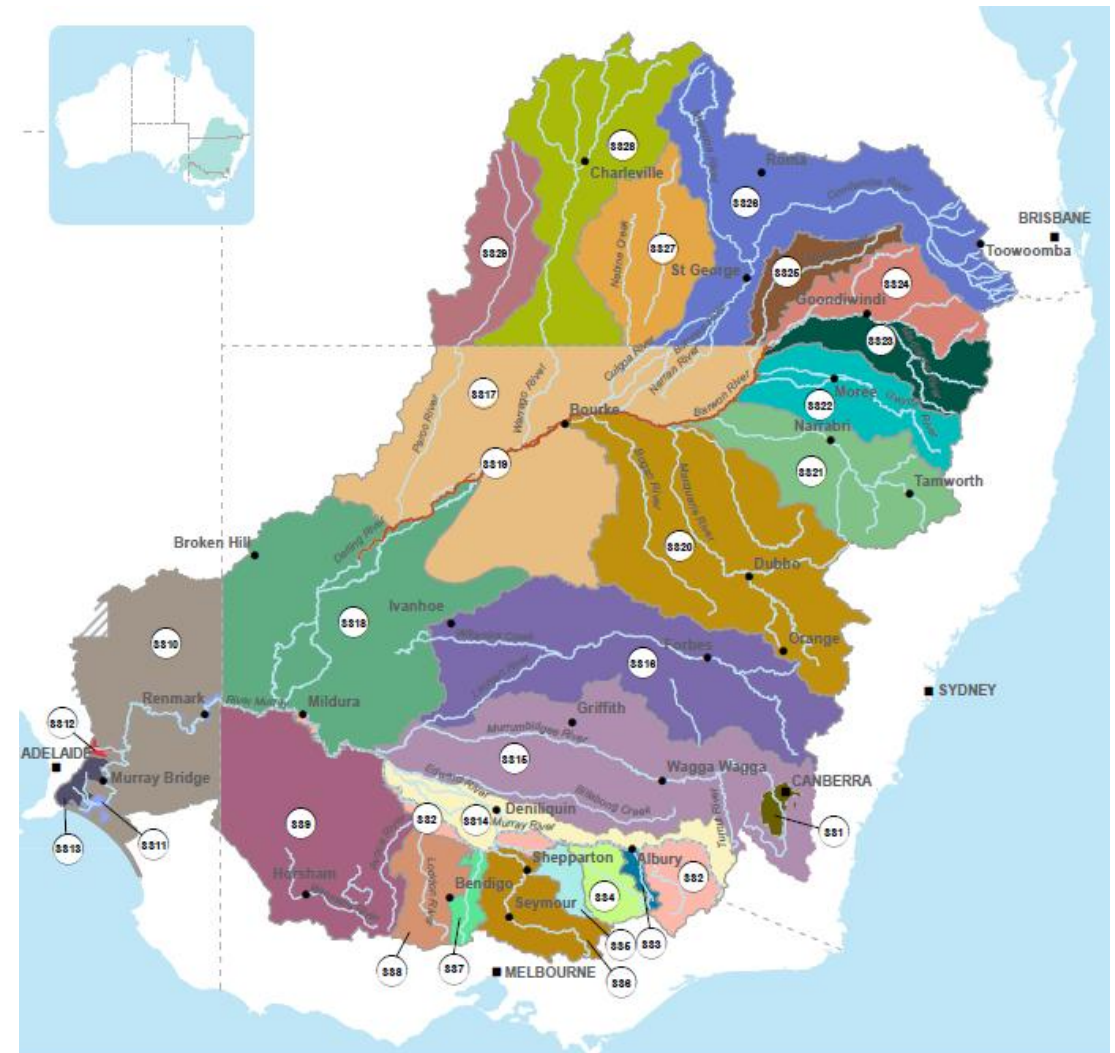
-  Water storage > 100 GL
-  Water storage < 100 GL
-  Weir
-  Irrigation area
-  Key environmental asset
-  Town/city

River Murray state water sharing

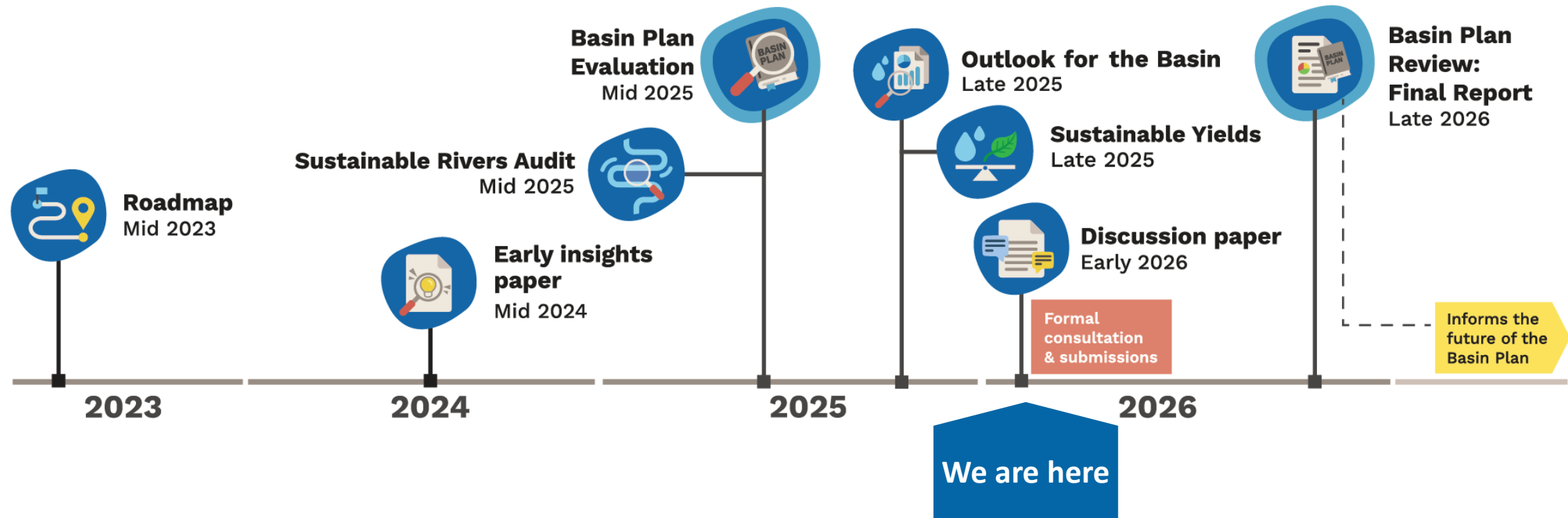


Sustainable diversion limits (SDLs)

- Limits on consumptive water use for surface and groundwater
- Must reflect an ‘environmentally sustainable level of take’



Basin Plan Review timeline



Where are we now?

In 2026, the water management context is different to that of 2012:

- >10 years of Basin Plan implementation, remain ongoing
- Additional ~2100GL of environmental water entitlements
- Ageing water infrastructure
- Tighter fiscal environment
- Greater First Nations peoples' participation
- Improving science and knowledge base



What we're exploring



- Do the **SDLs** reflect an **ESLT**?
- Making **better use** of water for the environment
- Supporting stronger participation of **First Nations people**
- Getting better **river connectivity** in the Northern Basin (Barwon-Darling)
- Ensuring we have the tools needed to adapt to **climate change**
- Improving **drought preparedness**



Australian Government



Murray-
Darling
Basin
Authority

How to make a submission

How to make a submission

Submissions may be made during the 12-week consultation period from **5 February 2026 until 5:00pm AEST on 1 May 2026**.

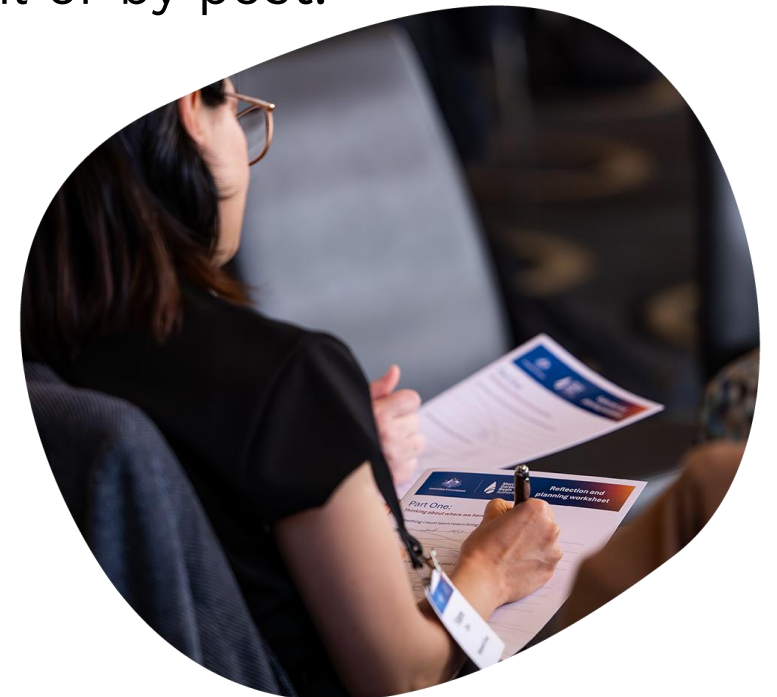
Submissions can be made online (preferred) or sent by email or by post.

getinvolved.mdba.gov.au/2026basinplanreview

Email: BPRsubmissions@mdba.gov.au

Postal address: Basin Plan Review submissions, Murray-Darling Basin Authority, GPO Box 1801, Canberra, ACT, 2601

If you need support, contact us at **1800 230 067**



What happens next?



Your **submission will inform the Basin Plan Review Report** due by the end of 2026.

We will publish a **‘What we heard’** report after submissions close.

The Review Report will outline the **Authority’s recommendations to the Government to improve Basin water management** over the next decade.



Australian Government



Murray-
Darling
Basin
Authority

Thank you

 mdba.gov.au

 1800 630 114

 engagement@mdba.gov.au

Office locations – *First Nations Country*

Adelaide – *Kurna Country*

Albury – *Wiradjuri Country*

Canberra – *Ngunnawal Country*

Goondiwindi – *Bigambul Country*

Griffith – *Wiradjuri Country*

Mildura – *Latji Lathi Country*

Murray Bridge – *Ngarrindjeri Country*